

**(DANRE) Icp1 Antibody (Center)**  
**Purified Rabbit Polyclonal Antibody (Pab)**  
**Catalog # AP20707c**

**Specification**

---

**(DANRE) Icp1 Antibody (Center) - Product Information**

Application	WB,E
Primary Accession	<a href="#">Q6P698</a>
Reactivity	Zebrafish
Host	Rabbit
Clonality	Polyclonal
Isotype	Rabbit IgG
Calculated MW	69900

**(DANRE) Icp1 Antibody (Center) - Additional Information**

**Other Names**

Plastin-2, L-plastin, Lymphocyte cytosolic plastin 1, Icp1 {ECO:0000312|EMBL:AAH623811}, pls2

**Target/Specificity**

This (DANRE) Icp1 antibody is generated from a rabbit immunized with a KLH conjugated synthetic peptide between 305-339 amino acids from the Central region of human (DANRE) Icp1.

**Dilution**

WB~~1:1000

E~~Use at an assay dependent concentration.

**Format**

Purified polyclonal antibody supplied in PBS with 0.09% (W/V) sodium azide. This antibody is purified through a protein A column, followed by peptide affinity purification.

**Storage**

Maintain refrigerated at 2-8°C for up to 2 weeks. For long term storage store at -20°C in small aliquots to prevent freeze-thaw cycles.

**Precautions**

(DANRE) Icp1 Antibody (Center) is for research use only and not for use in diagnostic or therapeutic procedures.

**(DANRE) Icp1 Antibody (Center) - Protein Information**

**Name** Icp1 {ECO:0000312|EMBL:AAH62381.1}

**Synonyms** pls2

**Function** Actin-binding protein. Plays a role in the activation of T- cells (By similarity).

**Cellular Location**

Cytoplasm, cytoskeleton {ECO:0000250|UniProtKB:P13796}. Cell junction {ECO:0000250|UniProtKB:P13796}. Cell projection {ECO:0000250|UniProtKB:P13796}. Cell projection, ruffle membrane {ECO:0000250|UniProtKB:P13796, ECO:0000250|UniProtKB:Q61233}; Peripheral membrane protein {ECO:0000250|UniProtKB:Q61233}; Cytoplasmic side {ECO:0000250|UniProtKB:Q61233}

#### Tissue Location

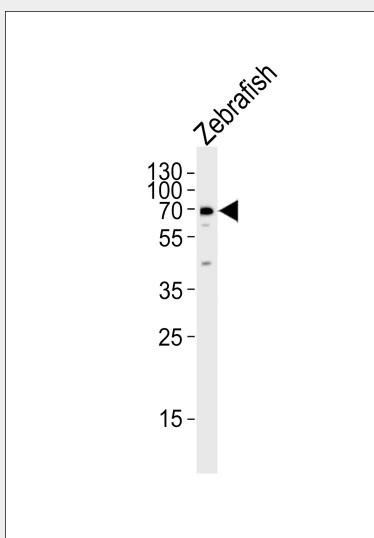
Expressed by macrophages (at protein level).

#### (DANRE) Icp1 Antibody (Center) - Protocols

Provided below are standard protocols that you may find useful for product applications.

- [Western Blot](#)
- [Blocking Peptides](#)
- [Dot Blot](#)
- [Immunohistochemistry](#)
- [Immunofluorescence](#)
- [Immunoprecipitation](#)
- [Flow Cytometry](#)
- [Cell Culture](#)

#### (DANRE) Icp1 Antibody (Center) - Images



Western blot analysis of lysate from Zebrafish tissue lysate, using (DANRE) Icp1 Antibody (Center)(Cat. #AP20707c). AP20707c was diluted at 1:1000. A goat anti-rabbit IgG H&L(HRP) at 1:5000 dilution was used as the secondary antibody. Lysate at 35ug.

#### (DANRE) Icp1 Antibody (Center) - Background

Actin-binding protein. Plays a role in the activation of T-cells (By similarity).

#### (DANRE) Icp1 Antibody (Center) - References

Herbomel P.,et al.Development 126:3735-3745(1999).